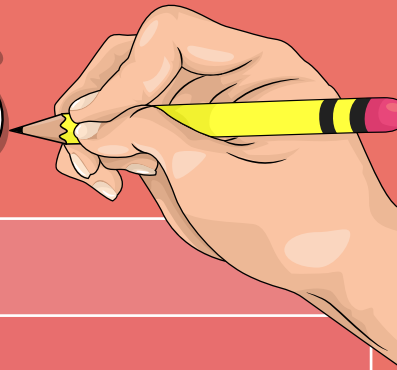




LITERACY CODES



Mark	Means...
Sp + underline	Try this spelling again.
P	Punctuation error.
G	Grammatical error.
C	Find the missing or misplaced capital letters.
//	New paragraph / Mark in where the paragraphs should be.
✓✓	Exceptional point / use of language.
?	Not clear. Rewrite this short section again to improve the expression.
FS	Write in full sentences.
Ex	Develop your explanation further using key vocabulary.
D	You need to add more detail. Add in the point you forgot to include.
WW	Wrong word e.g being / been. Try and find and correct it.